

ADDENDUM NO. 3
June 26, 2017

HARRISON COUNTY, TEXAS
BID# 2017-5 Gold Hall Project
KSA Project No. HC.010

KSA
1111 Hawn Avenue
Shreveport, Louisiana 71107
Phone: 318.221.7501
Fax: 318.221.7635



NOTICE TO BIDDERS:

The following items represent changes in the drawings and project manual for this project. This Addendum becomes a part of the Contract Documents. All Bidders shall be governed accordingly.

PROJECT MANUAL:

Make the following additions to the following section(s):

Item 1:

SECTION 08 33 00 – COILING DOOR AND GRILLES: Remove section in its entirety and replace with attached revised specification.

Item 2:

SECTION 09 30 00 – TILING: *CLARIFICATION:* Provide glazed/matte options for the ceramic wall tile indicated on the walls within Rooms 107, 108, and 109. Wall tile shall be manufacturer's comparable tile size to 4" x 4", 4 1/4" x 4 1/4", or 4 1/2" x 4 1/2" (RE: Sheet A8.01 for size, layout, and number of colors). Floor tile in the same rooms shall be manufacturer's comparable tile size to a 2" x 2" mosaic tile with cove base (RE: A8.02 for size, layout, and number of colors).

GENERAL:

ARCHITECTURAL

Item 3:

ASK1.05: See attached sketch for clarification about shower curb and shower bed construction.

PLUMBING

Item 4:

New water meter is indicated on revised Sheet P1.01 attached with this Addendum.

Item 5:

Refer to revised Sheet P1.01 for new water service and new sanitary sewer service to the building.

Item 6:

No circulation pump is required for the hot water system.

Item 7:

Lavatory faucets, as specified on the Plumbing Fixture Schedule on Sheet P2.01, has mixing valves for hot and cold water.

Item 8:

No mock-up will be required for the piping insulation.

Item 9:

Split foam insulation is acceptable for use on this project.

DRAWINGS:

Make the following additions and/or changes to the following sheet(s):

PLUMBING

Item 10:

SHEET P1.01 – FLOOR PLANS PLUMBING: Remove this sheet in its entirety and replace with attached.

ADDENDUM #3 is a total of eight (8) 8 ½" x 11" pages and one 24" x 36" page.

END OF ADDENDUM #3

SECTION 08 33 00
COILING DOOR AND GRILLES

PART 1 - GENERAL

1.1 SUMMARY

- A. Section includes:
 - 1. Fire-rated counter doors.
- B. Related Section:
 - 1. Division 05 Section "Metal Fabrications" for miscellaneous steel supports.

1.2 PERFORMANCE REQUIREMENTS

- A. Structural Performance, Exterior Doors: Exterior overhead coiling doors shall withstand the wind loads, the effects of gravity loads, and loads and stresses within limits and under conditions indicated according to SEI/ASCE 7.
 - 1. Wind Loads: Uniform pressure (velocity pressure) of 20 lbf/sq. ft. (960 Pa), acting inward and outward.
- B. Windborne-Debris-Impact-Resistance Performance: Provide impact-protective overhead coiling doors that pass missile-impact and cyclic-pressure tests when tested according to ASTM E 1886 and ASTM E 1996.
 - 1. Large Missile Test: For overhead coiling doors located within 30 feet (9.144 m) of grade.
- C. Seismic Performance: Overhead coiling doors shall withstand the effects of earthquake motions determined according to SEI/ASCE 7.

1.3 SUBMITTALS

- A. Product Data: For each type and size of overhead coiling door and accessory.
- B. Shop Drawings: For each installation and for special components not dimensioned or detailed in manufacturer's product data. Include plans, elevations, sections, details, and attachments to other work.
 - 1. Detail equipment assemblies and indicate dimensions, weights, loads, required clearances, method of field assembly, components, and location and size of each field connection.
 - 2. Show locations of replaceable fusible links.
 - 3. Wiring Diagrams: For power, signal, and control wiring.
- C. Samples: For each exposed product and for each color and texture specified.
- D. Seismic Qualification Certificates: For overhead coiling doors, accessories, and components, from manufacturer.
- E. Oversize Construction Certification: For door assemblies required to be fire-rated and that exceed size limitations of labeled assemblies.
- F. Maintenance Data.

1.4 QUALITY ASSURANCE

- A. Installer Qualifications: Manufacturer's authorized representative who is trained and approved for both installation and maintenance of units required for this Project.
- B. Fire-Rated Door Assemblies: Assemblies complying with NFPA 80 that are listed and labeled by a qualified testing agency, for fire-protection ratings indicated, based on testing at as close to neutral pressure as possible according to NFPA 252.
 - 1. Temperature-Rise Limit: At vertical exit enclosures and exit passageways, provide doors that have a maximum transmitted temperature end point of not more than 450 deg F (250 deg C) above ambient after 30 minutes of standard fire-test exposure.
 - 2. Smoke Control: In corridors and smoke barriers, provide doors that are listed and labeled with the letter "S" on the fire-rating label by a qualified testing agency for smoke- and draft-control based on testing according to UL 1784; with maximum air-leakage rate of 3.0 cfm/sq. ft. (0.01524 cu. m/s x sq. m) of door opening at 0.10 inch wg (24.9 Pa) for both ambient and elevated temperature tests.
- C. Electrical Components, Devices, and Accessories: Listed and labeled as defined in NFPA 70, by a qualified testing agency, and marked for intended location and application.

PART 2 - PRODUCTS

2.1 DOOR CURTAIN MATERIALS AND CONSTRUCTION

- A. Door Curtains: Fabricate overhead coiling-door curtain of interlocking metal slats, designed to withstand wind loading indicated, in a continuous length for width of door without splices. Unless otherwise indicated, provide slats of thickness and mechanical properties recommended by door manufacturer for performance, size, and type of door indicated, and as follows:
 - 1. Metal Interior Curtain-Slat Facing: Match metal of exterior curtain-slat face.
- B. Bottom Bar for Service Doors: Consisting of two angles, each not less than 1-1/2 by 1-1/2 by 1/8 inch (38 by 38 by 3 mm) thick; fabricated from metal to match curtain slats and finish.
- C. Bottom Bar for Counter Doors: Manufacturer's standard continuous channel or tubular shape, fabricated from metal to match curtain slats and finish.
- D. Astragal for Interior Doors: Equip each door bottom bar with a replaceable, adjustable, continuous, compressible gasket of flexible vinyl, rubber, or neoprene as a cushion bumper.
- E. Curtain Jamb Guides: Manufacturer's standard angles or channels and angles of same material and finish as curtain slats unless otherwise indicated, with sufficient depth and strength to retain curtain, to allow curtain to operate smoothly, and to withstand loading. Slot bolt holes for guide adjustment. Provide removable stops on guides to prevent overtravel of curtain.
 - 1. Removable Posts and Jamb Guides for Counter Doors: Manufacturer's standard.

2.2 HOOD

- A. General: Form sheet metal hood to entirely enclose coiled curtain and operating mechanism at opening head. Contour to fit end brackets to which hood is attached. Roll and reinforce top and bottom edges for stiffness. Form closed ends for surface-mounted hoods and fascia for any portion of between-jamb mounting that projects beyond wall face. Equip hood with intermediate support brackets as required to prevent sagging.

1. Include automatic drop baffle on fire-rated doors to guard against passage of smoke or flame.
2. Exterior-Mounted Doors: Fabricate hood to act as weather protection and with a perimeter sealant-joint-bead profile for applying joint sealant.

2.3 COUNTER DOORS

- A. Integral Frame, Hood, and Fascia for Counter Door: Welded sheet metal assembly of the following sheet metal:
- B. Integral Metal Sill for Counter Door: Fabricate sills as integral part of frame assembly of Type 304 stainless steel in manufacturer's standard thickness with No. 4 finish.
- C. Fire-Rated, Laminate Counter: Fire-door manufacturer's high-pressure decorative laminate-covered countertop, UL or ITS tested and labeled for 1-hour fire rating for approved use with fire-door assembly.

2.4 LOCKING DEVICES

- A. Slide Bolt: Fabricate with side-locking bolts to engage through slots in tracks for locking by padlock, located on both left and right jamb sides, operable from coil side.
- B. Locking Device Assembly: Fabricate with cylinder lock, spring-loaded dead bolt, operating handle, cam plate, and adjustable locking bars to engage through slots in tracks.
 1. Lock Cylinders: Provide cylinders standard with manufacturer and keyed to building keying system.
 2. Keys: Provide Three for each cylinder.
- C. Chain Lock Keeper: Suitable for padlock.
- D. Safety Interlock Switch: Equip power-operated doors with safety interlock switch to disengage power supply when door is locked.

2.5 CURTAIN ACCESSORIES

- A. Smoke Seals: Equip each fire-rated door with smoke-seal perimeter gaskets for smoke and draft control as required for door listing and labeling by a qualified testing agency.
- B. Weatherseals: Equip each exterior door with weather-stripping gaskets fitted to entire perimeter of door for a weathertight installation, unless otherwise indicated.
- C. Push/Pull Handles: Equip each push-up-operated or emergency-operated door with lifting handles on each side of door, finished to match door. Provide pull-down straps or pole hooks for doors more than 84 inches (2130 mm) high.
- D. Automatic-Closing Device for Fire-Rated Doors: Equip each fire-rated door with an automatic-closing device that is inoperative during normal door operations and that has a governor unit complying with NFPA 80 and an easily tested and reset release mechanism designed to be activated by the following:
 1. Replaceable fusible links with temperature rise and melting point of 165 deg F (74 deg C) interconnected and mounted on both sides of door opening.
 2. Manufacturer's standard UL-labeled smoke detector and door-holder-release devices.
 3. Manufacturer's standard UL-labeled heat detector and door-holder-release devices.

4. Building fire-detection and -alarm systems and manufacturer's standard door-holder-release devices.

2.6 COUNTERBALANCING MECHANISM

- A. General: Counterbalance doors by means of manufacturer's standard mechanism with an adjustable-tension, steel helical torsion spring mounted around a steel shaft and contained in a spring barrel connected to top of curtain with barrel rings. Use grease-sealed bearings or self-lubricating graphite bearings for rotating members.
- B. Brackets: Manufacturer's standard mounting brackets of either cast iron or cold-rolled steel plate.

2.7 MANUAL DOOR OPERATORS

- A. Equip door with manufacturer's recommended manual door operator unless another type of door operator is indicated.

2.8 DOOR ASSEMBLY

- A. Interior Overhead Fire-Rated Coiling Counter Door: interior overhead fire-rated coiling counter door (6'-8" W x 4'-0" H – to be verified based on manufacturer's sizes located between the Assembly Hall and the Kitchen).
 1. Manufacturers: Subject to compliance with requirements, available manufacturers offering products that may be incorporated into the Work include, but are not limited to, the following:
 - a. Cornell Iron Works, Inc.
 - b. McKeon Rolling Steel Door Company, Inc.
 - c. Metro Door.
 - d. Windsor Door.
- B. Operation Cycles: Not less than 100,000.
- C. Fire Rating: 1-hour with temperature-rise limit and with smoke control.
- D. Door Curtain Material: Stainless Steel.
- E. Door Curtain Slats: Flat profile slats of 1-1/2-inch (38-mm).
- F. Curtain Jamb Guides: Stainless steel with exposed finish matching curtain slats. Provide continuous integral wear strips to prevent metal-to-metal contact and to minimize operational noise.
- G. Hood: Match curtain material and finish.
 1. Shape: Square.
 2. Mounting: Face of wall.
- H. Integral Frame, Hood, and Fascia for Counter Door: Stainless steel.
 1. Mounting: Face of wall.
- I. Sill Configuration for Counter Door: Integral metal sill.
- J. Locking Devices: Equip door with slide bolt for padlock and chain lock keeper.

1. Locking Device Assembly: Cremone type, both jamb sides locking bars, operable from inside and outside with cylinders.
- K. Manual Door Operator: Chain-hoist operator.
1. Provide operator with through-wall shaft operation.
 2. Provide operator with manufacturer's standard removable operating arm.
- L. Door Finish:
1. Stainless-Steel Finish: No. 4 (polished directional satin).
 2. Interior Curtain-Slat Facing: Match finish of exterior curtain-slat face.

PART 3 - EXECUTION

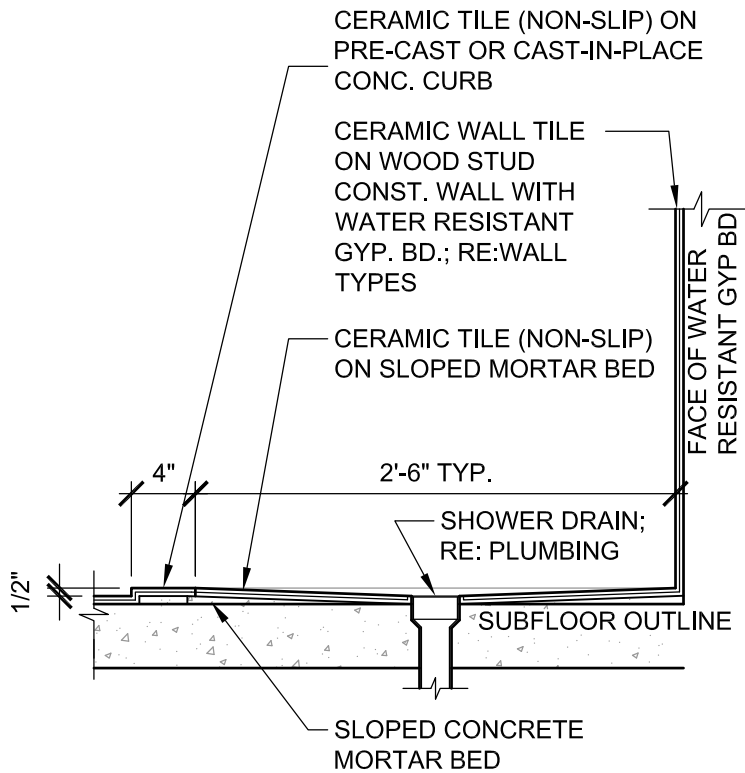
3.1 INSTALLATION

- A. Install overhead coiling doors and operating equipment complete with necessary hardware, anchors, inserts, hangers, and equipment supports; according to manufacturer's written instructions and as specified.
- B. Fire-Rated Doors: Install according to NFPA 80.
- C. Smoke-Control Doors: Install according to NFPA 80 and NFPA 105.
- D. Adjust hardware and moving parts to function smoothly so that doors operate easily, free of warp, twist, or distortion. Lubricate bearings and sliding parts as recommended by manufacturer. Adjust seals to provide weathertight fit around entire perimeter.

3.2 DEMONSTRATION

- A. Engage a factory-authorized service representative to train Owner's maintenance personnel to adjust, operate, and maintain overhead coiling doors.

END OF SECTION 08 33 00



A **SHOWER DETAIL (ADA)**
1"=1'-0"



1111 Hawn Avenue
Shreveport, LA 71107
phone 318.221.7501
fax 318.221.7635
www.ksaeng.com

Project Name

**GOLD HALL COMMUNITY
CENTER RENOVATIONS
(BID #2017-5 Gold Hall Project)
HALLSVILLE, TX**

Designed **JES**

Revision No. **1**

Drawn **BAS**

Ref. Dwg. No.

Project No. **HC.010**

Date **JUNE, 2017**

Scale **1" = 1'-0"**

Additional Information

Drawing No. **ASK1.05**

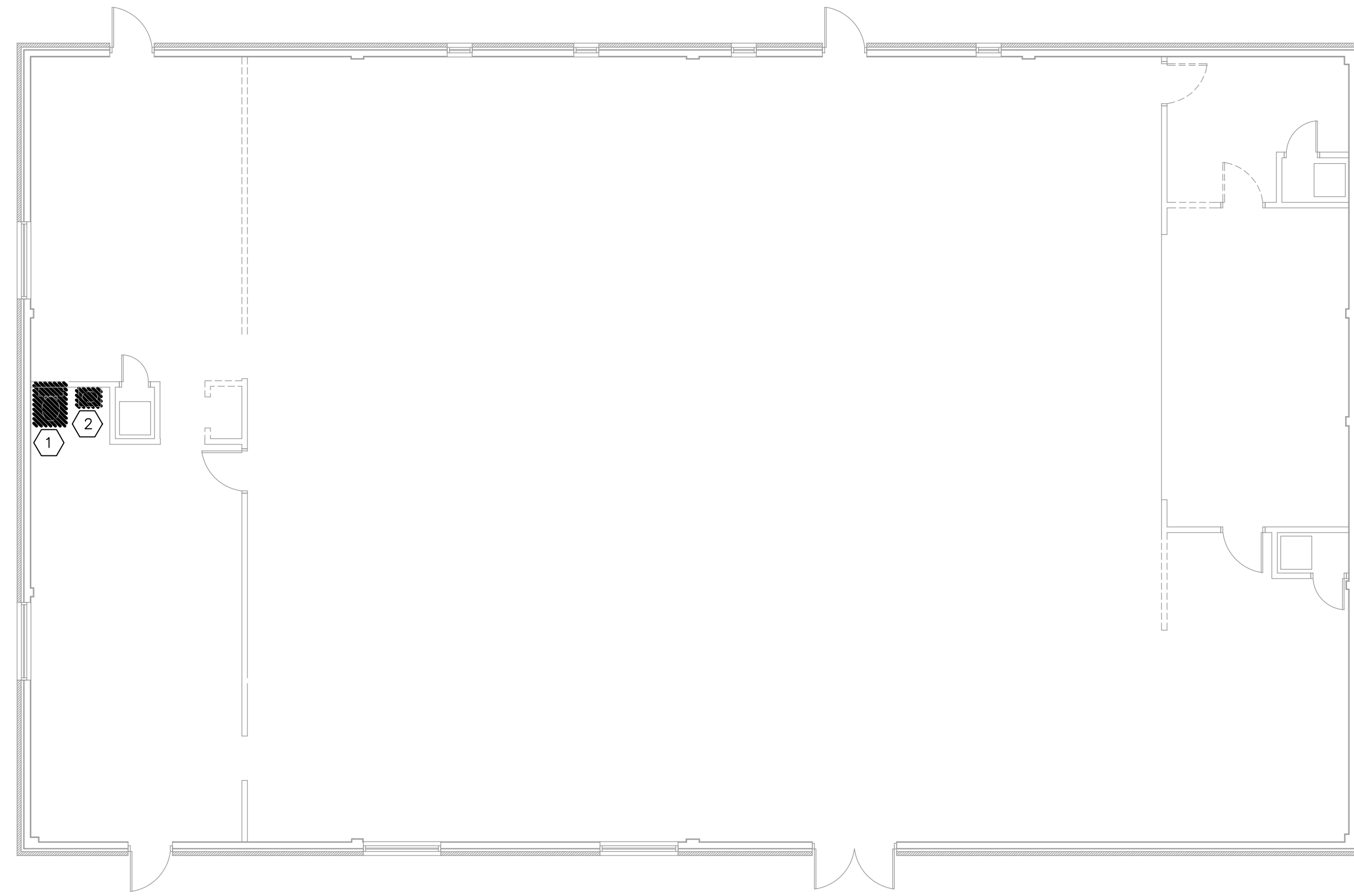
COPYRIGHT

ALL REPORTS, PLANS, SPECIFICATIONS, COMPUTER FILES, FIELD DATA, NOTES AND OTHER DOCUMENTS AND ANY INSTRUMENTS PREPARED BY KSA. AS INSTRUMENTS OF SERVICE SHALL REMAIN THE PROPERTY OF KSA. KSA SHALL RETAIN ALL COMMON LAW, STATUTORY AND OTHER PRESERVED RIGHTS, INCLUDING THE COPYRIGHT THERE TO. COPYING OR REPRODUCTION OF INSTRUMENTS OF SERVICE WITHOUT THE EXPRESS CONSENT OF KSA IS STRICTLY PROHIBITED.

1111 Hawn Avenue
Shreveport, LA 71107

www.ksaeng.com

phone 318.221.7501
fax 318.221.7635



01 FLOOR PLAN - PLUMBING DEMOLITION
1/8" = 1'-0"

DEMOLITION NOTES:

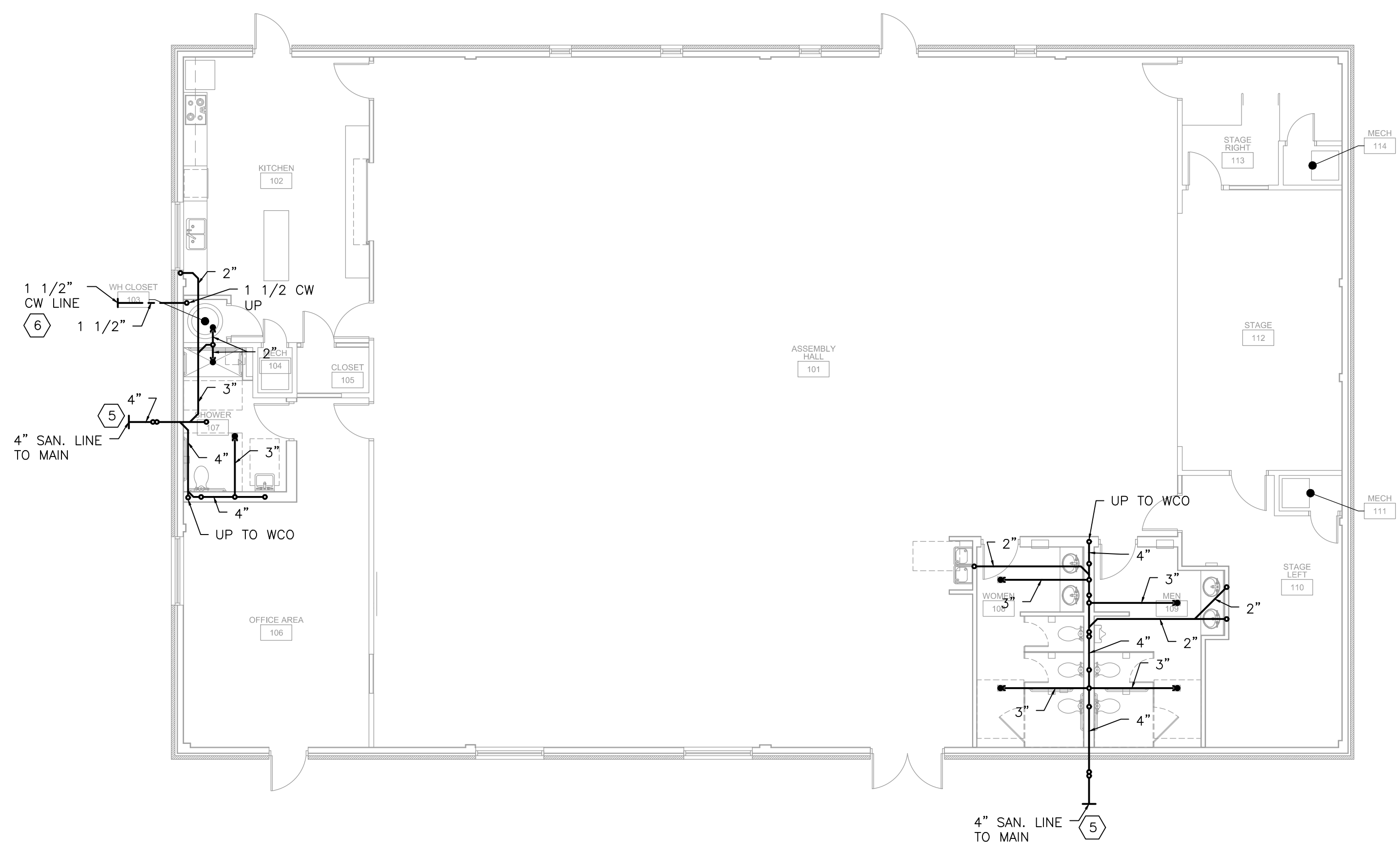
1. CONTRACTOR TO COORDINATE DEMOLITION OF PLUMBING WORK WITH THE MECHANICAL AND ELECTRICAL DEMOLITION WORK.
2. DEMOLITION SHALL BE PERFORMED SO THAT DAMAGE TO THE SURROUNDING AREAS IS MINIMIZED. AREAS DAMAGED AND NOT SHOWN TO BE RENOVATED SHALL BE REPAIRED BY THE CONTRACTOR AT HIS COST.
3. DRAWINGS ARE RECORD DRAWINGS AND ARE NOT AS-BUILT DRAWINGS. THEY ARE REPRESENTATIVE AND MAY NOT SHOW ALL ITEMS REQUIRED TO BE DEMOLISHED.

NOTES BY SYMBOL:

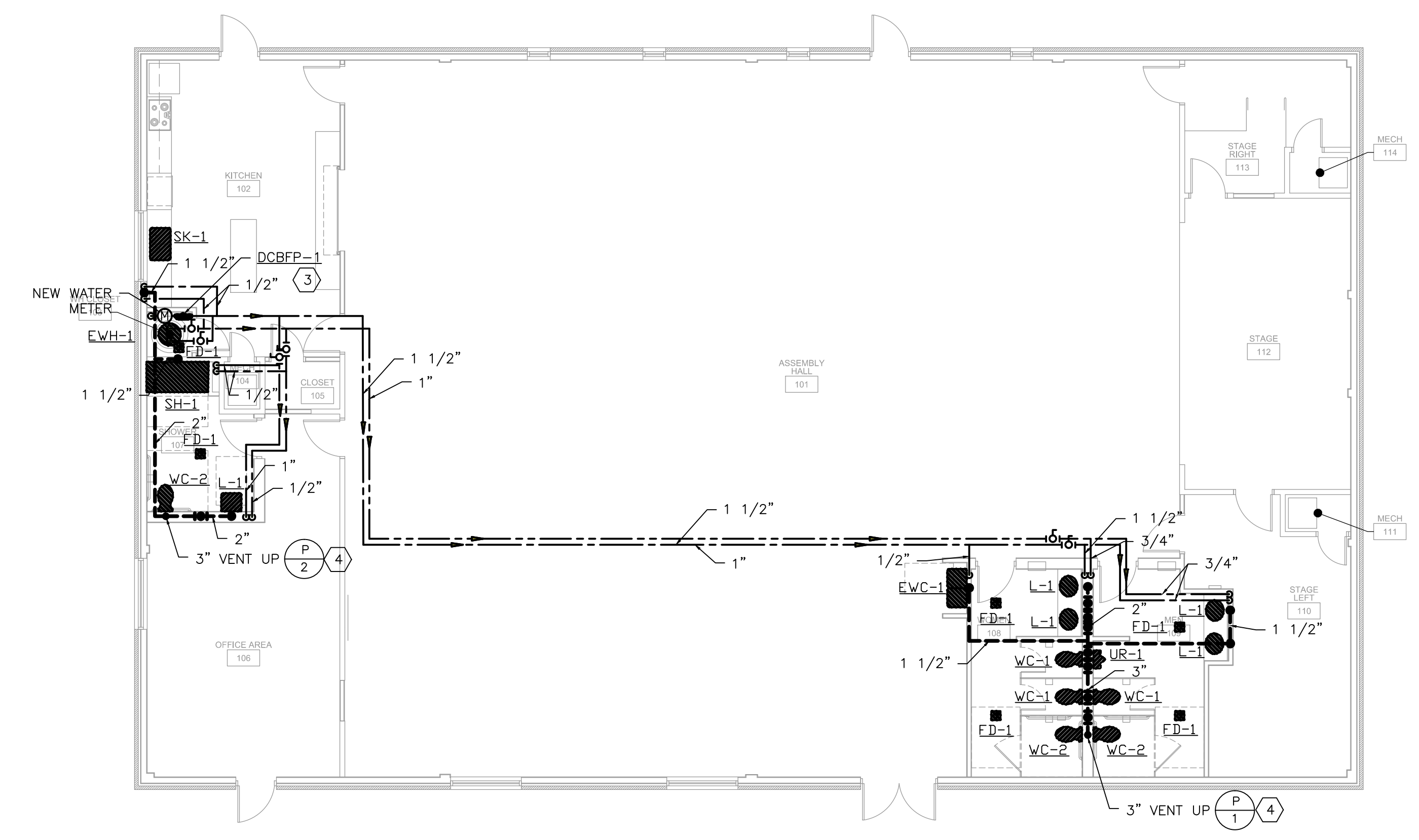
1. EXISTING WATER CLOSET TO BE REMOVED AND DISCARDED. CONTRACTOR TO CAP EXISTING SANITARY SEWER, VENT AND WATER LINES IN PLACE FOR FUTURE WORK.
2. EXISTING LAVATORY TO BE REMOVED AND DISCARDED. CONTRACTOR TO CAP EXISTING SANITARY SEWER, VENT AND HOT AND COLD WATER LINES IN PLACE FOR FUTURE WORK.
3. DCBFP-1: DOUBLE CHECK BACKFLOW PREVENTER (WATTS MODEL NO. 007M2-QT OR APPROVED EQUAL).
4. CONTRACTOR TO CONNECT NEW VENT TO EXISTING VENT THROUGH ROOF. VERIFY THE SIZE, LOCATION AND CONDITION OF EXISTING VENT PRIOR TO CONNECTION OF NEW WORK.
5. NEW 4" SANITARY SEWER LINE TO EXISTING SEWER MAIN. CONTRACTOR TO VERIFY SIZE, LOCATION, CONDITION AND INVERT ELEVATION OF EXISTING SEWER LINE PRIOR TO FINAL CONNECTION OF NEW WORK.
6. NEW 1 1/2" DOMESTIC WATER LINE TO EXISTING MAIN. CONTRACTOR TO VERIFY SIZE, LOCATION AND CONDITION OF EXISTING WATER LINE PRIOR TO FINAL CONNECTION OF NEW WORK.

GENERAL NOTES:

1. CONTRACTOR SHALL FIELD VERIFY ALL EXISTING CONDITIONS PRIOR TO BIDDING. THE ACT OF BIDDING SHALL BE PROOF THAT THE BIDDING CONTRACTOR HAS PERFORMED A SITE INSPECTION, FULLY UNDERSTANDS THE SCOPE OF WORK AND HAS INCLUDED ALL COSTS IN BID.
2. LONG RADIUS ELBOWS SHALL BE USED THROUGHOUT UNLESS OTHERWISE NOTED.
3. IF NOT DESIGNATED, FLOOR DRAINS, DRAINAGE AND SANITARY PIPING SHALL BE FOUR (4) INCHES NOMINAL SIZE.
4. ALL SANITARY LINES SHALL BE AT TWO (2) PERCENT MINIMUM SLOPE UNLESS OTHERWISE INDICATED.
5. LOCATION, FINISHES AND INSTALLATION FOR ALL PLUMBING, DRAINAGE DEVICES AND ACCESS PANELS IN PUBLIC AREAS SHALL BE COORDINATED WITH THE ARCHITECT.
6. PIPE LOCATIONS SHOWN ARE FOR ILLUSTRATION ONLY. LOCATE SERVICE LINES AND DROPS AGAINST WALLS AND BEHIND EQUIPMENT WHERE POSSIBLE.
7. ALL NEW WATER PIPE SHALL BE COPPER PIPE UNLESS OTHERWISE NOTED ON CONSTRUCTION DRAWINGS.
8. FOR EACH WASTE WATER LATERAL, CONTRACTOR SHALL SUPPLY, INSTALL AND CONNECT SERVICE TO EQUIPMENT. SLOPE WASTEWATER A MINIMUM OF 1/4" PER FOOT.
9. CONTRACTOR SHALL PRESSURE TEST PLUMBING SYSTEM PRIOR TO FINAL HOOK-UP.
10. SECURE AND VERIFY ALL MEASUREMENTS AND CONDITIONS AT JOB BEFORE PROCEEDING WITH FABRICATION OF WORK.
11. ROUGH IN ALL PIPING THRU FACE OF WALL WHERE POSSIBLE, EXCEPT IN OUTSIDE WALLS TERMINATE WITH SHORT NIPPLE AND CAP.
12. WORK SHALL BE INSTALLED IN ACCORDANCE WITH THE LOCAL PLUMBING CODE.
13. ALL FIXTURES TO BE EQUIPPED WITH STOP VALVES IN ACCESSIBLE LOCATIONS.
14. PROVIDE 1/2" TRAP PRIMER LINES TO ALL FLOOR DRAINS. TRAP PRIMER LINES SHALL BE INSULATED.
15. CONTRACTOR SHALL SMOKE TEST SANITARY VENT PIPING.
16. CONTRACTOR SHALL PROVIDE ALL NECESSARY ACCESSORIES, APPARATUS, EQUIPMENT, PARTS AND LABOR TO PROVIDE A FULLY OPERATIONAL SYSTEM.
17. UNLESS NOTED OTHERWISE ON THE DRAWINGS, ALL DOMESTIC WATER LINES ARE RUNNING OVERHEAD IN THE CEILING SPACE.



02 UNDERFLOOR PLAN - PLUMBING
1/8" = 1'-0"



03 FLOOR PLAN - PLUMBING
1/8" = 1'-0"



COPYRIGHT
ALL REPORTS, PLANS, SPECIFICATIONS, COMPUTER FILES, FIELD DATA, NOTES AND OTHER DOCUMENTS AND ANY INSTRUMENTS PREPARED BY KSA, AS INSTRUMENTS OF SERVICE SHALL REMAIN THE PROPERTY OF KSA. KSA SHALL RETAIN ALL COMMON LAW, STATUTORY AND OTHER PRESERVED RIGHTS, INCLUDING THE COPYRIGHT THEREON. COPYING OR REPRODUCTION OF INSTRUMENTS OF SERVICE WITHOUT THE EXPRESS CONSENT OF KSA IS STRICTLY PROHIBITED.

GOLD HALL COMMUNITY CENTER RENOVATIONS (BID # 2017-5 Gold Hall Project) HALLSVILLE, TX
FLOOR PLANS - PLUMBING

No.	Revision	By / Date



SEAL: TBPE Firm Registration No. F-1356

Designed	JKH/ KHK
Drawn	KHK
Checked	JKH
Project Phase	CONSTRUCTION DOCUMENTS
Date	JUNE, 2017
Project No.	HC.010
Scale	1/8" = 1'-0"
Drawing No.	P1.01